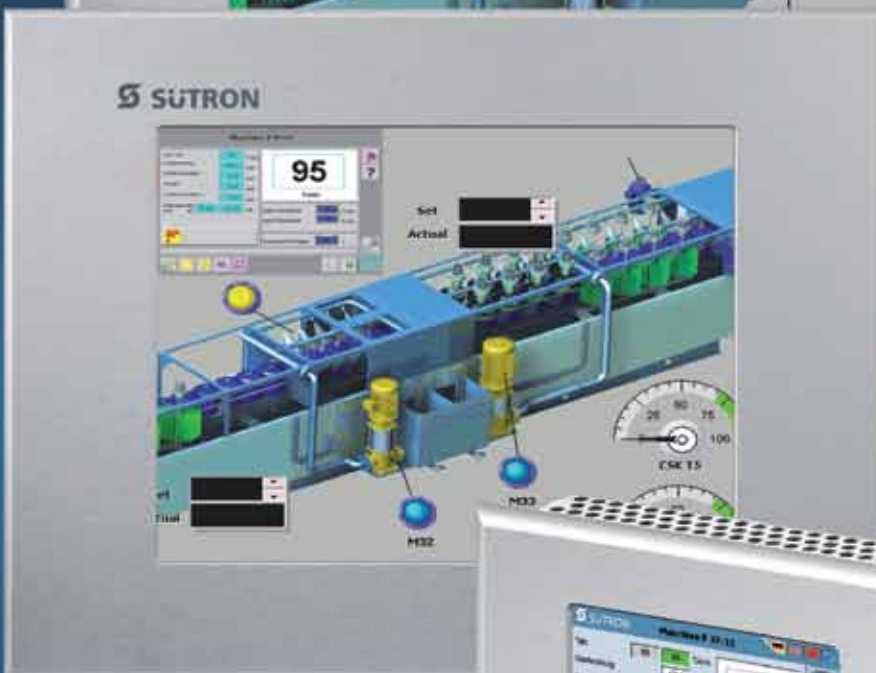
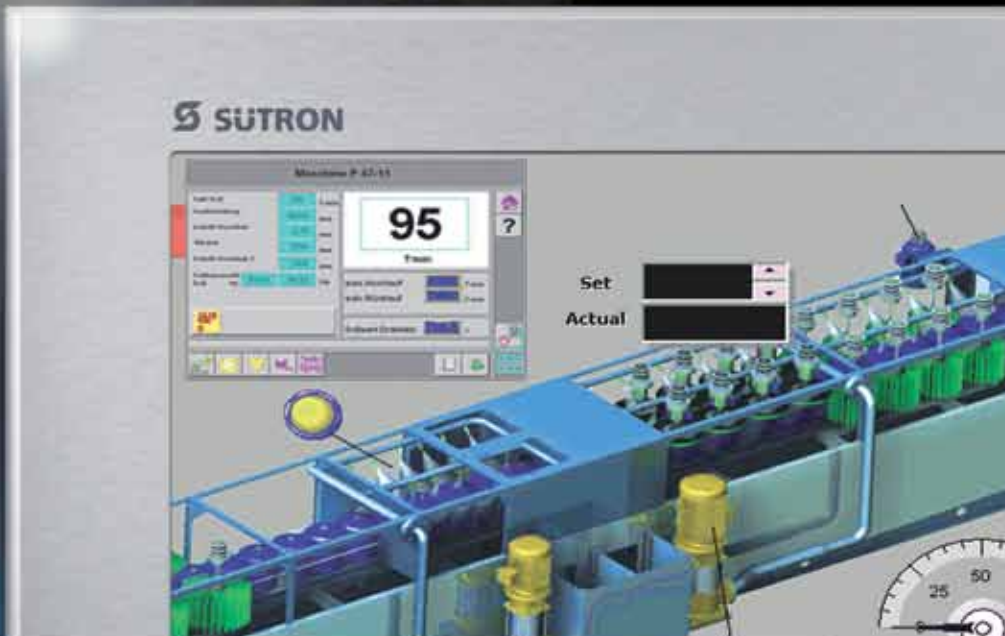


HMI emPower Line

Touch screen panel


 SUTRON


HMI **hardware**





- Powerful product family with 806 MHz
- Available as a web, graphical, control and SDK panel
- Control at the panel level via IEC 61131-3, field bus and Ethernet
- Integration capabilities and certified bundles generate added value
- Continuous data flow between field, process and management level (trending, logging, ERP, BDE, MES and MDE)

Technical Data	General
Touch screen	Analog resistive
Processor	RISC CPU, 806 MHz, real-time clock
Operating system	Windows CE 5.0
Memory	1 GB Flash; 128 MB SDRAM; 1 MB SRAM (battery-backed) Compact Flash Typ I und II
Interfaces	Feldbus Master: CAN Master/ Diagnose, DeviceNet Master / Diagnose, INTERBUS Master / Diagnose, Profibus Master / Diagnose, Ethernet Master / Diagnose Feldbus Slave: CAN, DeviceNet, MPI, Profibus DP Serial interfaces: RS232 / RS485 / TTY/20mA Digital inputs: 4; Digital outputs: 4; USB: 1 x Device, 2 x Host
Connection system	RJ45 female connector, USB female connector (type A), Phoenix COMBICON connector strips, D-SUB male and female connector strips
Supply voltage	24 V DC (SELV in accordance with DIN EN 61131) Minimum/maximum voltage: 18 V - 30 V DC
Degrees of protection	Front: IP65 Rear: IP20
Temperature range	Operation: 0 °C bis 50 °C Storage: -25 °C bis 70 °C
Relative air humidity for operation and storage	20% to 85% no dew condensation (non-condensing)
Front panel	Aluminium, natural anodized finish
Housing	Zinc-coated sheet steel
Certification	CE, UL, cUL
Applications	In numerous industrial sectors, such as: The automotive and automotive supply industry, plant construction and mechanical engineering, food and luxury food industry, etc.
External keyboard / mouse / barcode reader	* / * / *

Technical Data	TP65XiT	
Display	16,51 cm (6,5") TFT / LED backlight white	
Colors	65536	
Resolution (W x H in pixels)	640 x 480	
Front panel dimensions (W x H x D in mm)	210 x 158 x 5	
Mounting cut-out (W x H in mm)	202 x 150	
Mounting depth (in mm)		
- with bus interface	60	
- without bus interface	55	
Current consumption	0,7 A	
Connected load	16,8 W	
Weight (in g)	1300	

Technical Data	TP104XiT	
Display	26,42 cm (10,4") TFT	
Colors	65536	
Resolution (W x H in pixels)	640 x 480	
Front panel dimensions (W x H x D in mm)	328 x 249 x 5	
Mounting cut-out (W x H in mm)	303 x 222	
Mounting depth (in mm)		
- with bus interface	60	
- without bus interface	55	
Current consumption	0,7 A	
Connected load	16,8 W	
Weight (in g)	2200	

Technical Data	TP121XiT	
Display	30,73 cm (12,1") TFT	
Colors	65536	
Resolution (W x H in pixels)	800 x 600	
Front panel dimensions (W x H x D in mm)	340 x 270 x 5	
Mounting cut-out (W x H in mm)	315 x 244	
Mounting depth (in mm)		
- with bus interface	65	
- without bus interface	60	
Current consumption	0,7 A	
Connected load	16,8 W	
Weight (in g)	2500	

Technical Data	TP151XiT	
Display	38,35 cm (15,1") TFT	
Colors	65536	
Resolution (W x H in pixels)	1024 x 768	
Front panel dimensions (W x H x D in mm)	400 x 329 x 5	
Mounting cut-out (W x H in mm)	373 x 302	
Mounting depth (in mm)		
- with bus interface	65	
- without bus interface	60	
Current consumption	1,0 A	
Connected load	24 W	
Weight (in g)	3600	

Powerful HMI Devices

The XiT touch screen panel of the HMI emPower Line offers the flexibility of a PC combined with a rugged, compact and cost-effective hardware.

Web Panel

Integrated Internet Explorer, client/server functionality and software packages: such as Citrix, Microsoft Terminal Client, Internet Browser with Java Plug In.

Graphics Panel

Communication can be carried out via serial or fieldbus slave modules: HMI visualization software TSvisRT or visualization software of third-party suppliers such as Movicon and COPADATA.

Control Panel

SoftPLC and visualization as a compact unit:

- Communication can be carried out via the fieldbus master module
- Integration of a very wide range of suppliers such as 3S Smart Software Solutions, KWSsoftware and IBH Softec.

SDK Panel

Open platform for customized solutions:

- Software interfaces provide access options to hardware
- Description of all the panel's internal access mechanisms
- SÜTRON offers assistance in embedding customized software

SÜTRON electronic GmbH

Kurze Str. 29
70794 Filderstadt
Tel. 0711 / 77098-89
Fax 0711 / 77098-960
www.suetron.de
info@suetron.de