

- Powerful programming tool for all automation tasks
- Internationalization possible thanks to Unicode capability and convenient language management
- Tailor-made solutions through script processing functions
- Alarm and message system
- Can be used in a wide number of industrial sectors



SÜTRON

SÜTRON electronic GmbH
 Kurze Strasse 29
 70794 Filderstadt
 Tel.: +49 (0)711 / 770981

www.suetron.de
info@suetron.de

TSwin .net

Windows 2000
 Windows XP

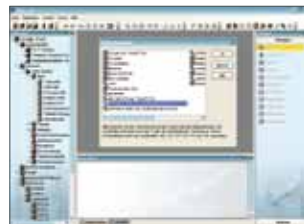
- ✓ More than 25 controller protocols:
Allen Bradley DF1, Beckhoff ADS, Bosch BUEP 19E, CANopen, Device Net, Interbus, Mitsubishi FX, Modbus RTU, Moeller SU COM1 PS4-201, Profibus DP, Schleicher ProComm plus, Siemens S7 MPI, Siemens S7 TCP, etc.
- ✓ Template files for all operator systems
- ✓ Up to 16 languages, online switchable
- ✓ 9999 messages can be created, 3000 system messages
- ✓ Comprehensive script processing
- ✓ Up to 9999 process screens (depending on available memory)
- ✓ Comprehensive recipe management with up to 250 recipes, each containing 250 data sets
- ✓ 8-step password management
- ✓ Print logs and subprint logs
- ✓ Unicode capability provided by all visualization functions
- ✓ Import and export function for language translations



Message systems



Script processing



Controller protocols



Trending



Unicode



Straightforward and Effective Programming

TSwin .net provides users with a straightforward tool for programming buttons, password protection, screens, bars, input and output fields, text strings, graphics, and much more.

Convincing Usability

- Prevention of operating errors
- Significantly reduced familiarization period
- A diagnostic tool simplifies the retrieval of information through the use of an integrated website in the HMI.
- Full Unicode implementation
- Option to customize the operating processes in a flexible manner to meet customer specifications
- Message system featuring real-time and history message channel
- Recipe management
- Freely programmable print logs

Flexible Application

TSwin .net was conceived as a sector-neutral application and thus permits flexible implementation across numerous branches of industry. Script processing, data transfer, transfer functions, system variables, etc. enable integration of HMI solutions in the widest variety of automation tasks.